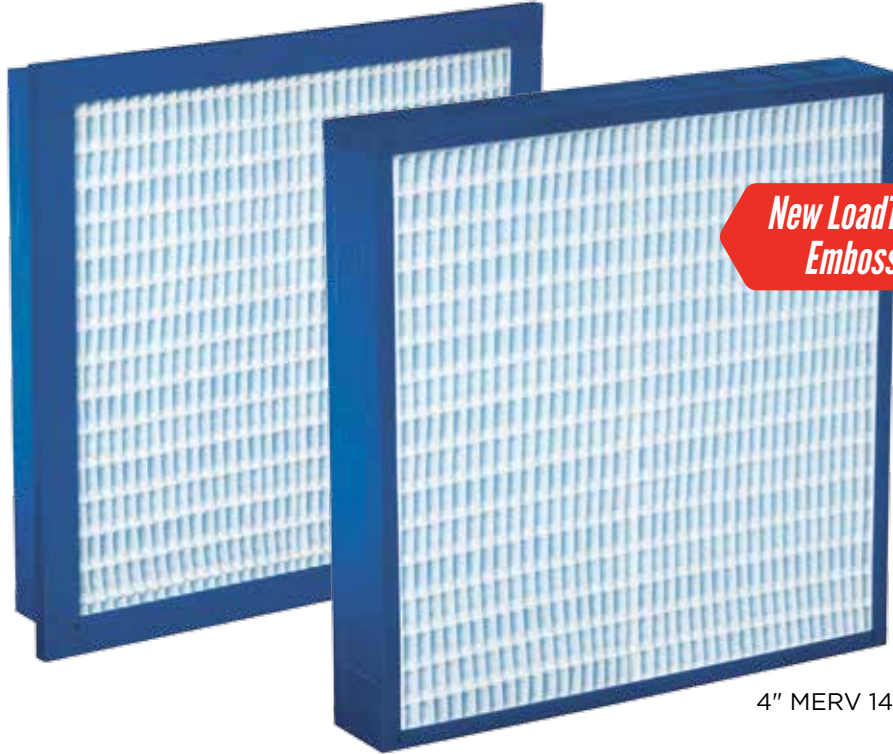


# Dominator<sup>®</sup>

High efficiency rigid filters featuring E-pleat<sup>®</sup> Technology



New LoadTech<sup>™</sup>  
Embossed Design!

4" MERV 14



4" MERV 11



12" MERV 11 | 12" MERV 15

**COMING SOON!**

- Dominator LoadTech 12" MERV 15
- Custom sizes

**Purolator**<sup>™</sup>

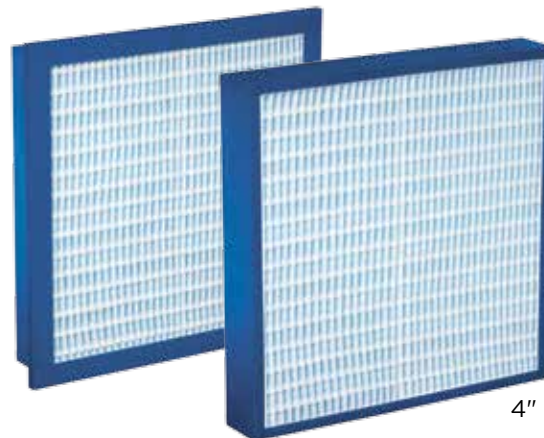
## INTRODUCING THE NEW

# Dominator® LoadTech™

All Dominator 4" MERV 14 filters are now better than ever! Still manufactured with our proprietary E-pleat® Technology, these filters now have new and improved media!

### Benefits

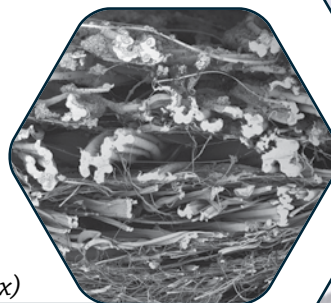
- Holds 2X more dust with new, exclusive media with our LoadTech Embossed Design
- Longer filter life and fewer filter change-outs with higher dust holding capacity
- 12" filter performance in a 4" filter
- High efficiency - MERV 14
- Cost savings - reduced energy costs with low pressure drop and low energy consumption
- Simplified handling and easy installation - plus reduced storage space, less weight and lower shipping costs
- Earn points toward LEED Certification



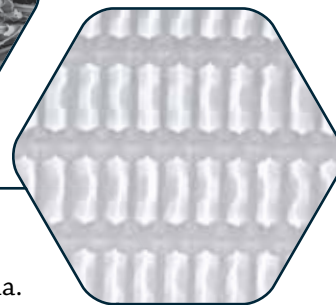
### Product Features

- E-pleat Technology allows for smooth airflow, even loading and complete utilization of the media
- 100% synthetic, exclusive blue media
- Completely incinerable with high impact plastic frame
- Lightweight construction

LoadTech media with Embossed Design



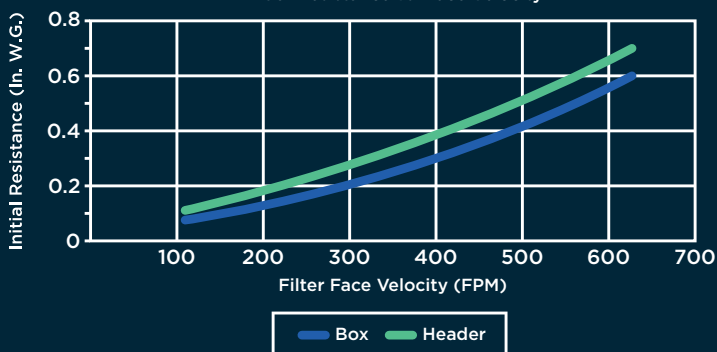
SEM image of new LoadTech media (164x)



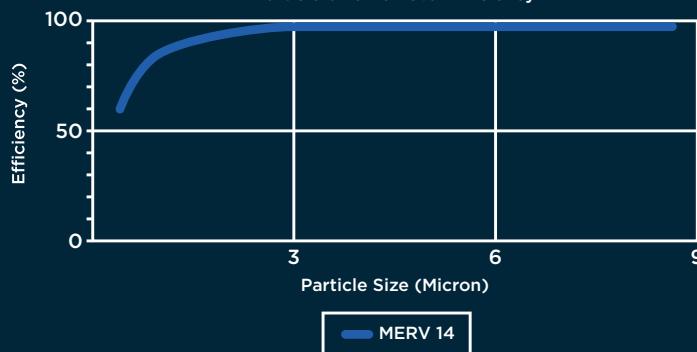
### E-Pleat Technology

Dominator and Dominator LoadTech filters are manufactured with our proprietary E-pleat Technology. The media is molded into a series of pre-formed channels that direct the air smoothly through the filter - allowing for even loading and complete utilization of the media.

Dominator LoadTech  
Initial Resistance vs. Face Velocity



Dominator LoadTech  
Particle Size Removal Efficiency



# Dominator®

The popular Dominator 4" MERV 11 and Dominator 12" MERV 11 and MERV 15 filters are still manufactured with our proprietary E-pleat® Technology and maintain the high quality and performance you have come to expect.



4" MERV 11



12" MERV 11  
12" MERV 15

## Benefits

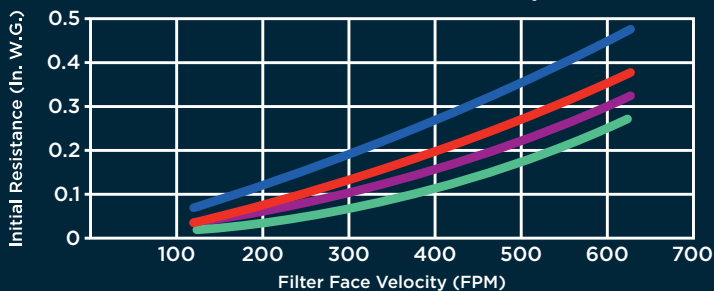
- High efficiency - MERV 11 (4" and 12") and MERV 15 (12")
- Cost savings - reduced energy costs with low pressure drop and low energy consumption
- Simplified handling and easy installation - plus reduced storage space, less weight and lower shipping costs
- Earn points toward LEED Certification on Dominator 12" MERV 15

## Product Features

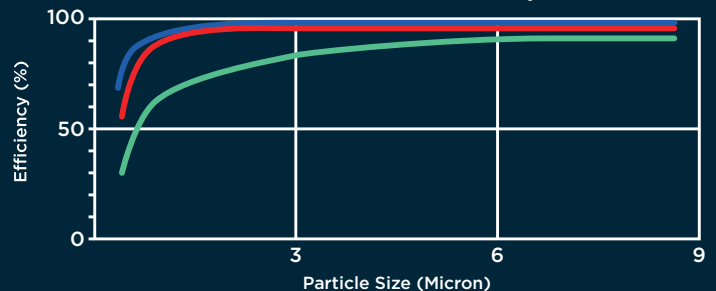
- E-pleat Technology allows for smooth airflow, even loading and complete utilization of the media
- 100% synthetic white media
- Completely incinerable with high impact plastic frame
- Lightweight construction



**Dominator 4" and 12"**  
Initial Resistance vs. Face Velocity



**Dominator**  
Particle Size Removal Efficiency



■ MERV 15 12" Single Header   
 ■ MERV 15 Box / MERV 11 Single Header   
 ■ MERV 11 12" Box   
 ■ MERV 11 4" Box

■ MERV 15   
 ■ MERV 14   
 ■ MERV 11

## Box Style

## Single Header

### Dominator LoadTech

Model Number	Nominal Size (WxHxD) Inches	Actual Size (WxHxD) Inches	Rated Air Flow Capacity (CFM)
<b>Dominator LoadTech 4" - MERV 14</b> Initial Resistance (In. W.G.): 0.44" Recommended Final Resistance (In. W.G.): 1.5"			
DRLT95-4404	24 x 24 x 4	23 3/8 x 23 3/8 x 3 3/4	2000
DRLT95-0504	20 x 25 x 4*	19 3/8 x 24 3/8 x 3 3/4	1750
DRLT95-0404	20 x 24 x 4	19 3/8 x 23 3/8 x 3 3/4	1650
DRLT95-0004	20 x 20 x 4	19 3/8 x 19 3/8 x 3 3/4	1400
DRLT95-6504	16 x 25 x 4*	15 3/8 x 24 3/8 x 3 3/4	1400
DRLT95-6004	16 x 20 x 4	15 3/8 x 19 3/8 x 3 3/4	1100
DRLT95-2404	12 x 24 x 4	11 3/8 x 23 3/8 x 3 3/4	1100

Model Number	Nominal Size (WxHxD) Inches	Actual Size (WxHxD) Inches	Rated Air Flow Capacity (CFM)
<b>Dominator LoadTech 4" - MERV 14</b> Initial Resistance (In. W.G.): 0.53" Recommended Final Resistance (In. W.G.): 1.5"			
DRLT95-H-4404	24 x 24 x 4	23 3/8 x 23 3/8 x 3 3/4	2000
DRLT95-H-0404	20 x 24 x 4	19 3/8 x 23 3/8 x 3 3/4	1650
DRLT95-H-0004	20 x 20 x 4	19 3/8 x 19 3/8 x 3 3/4	1400
DRLT95-H-2404	12 x 24 x 4	11 3/8 x 23 3/8 x 3 3/4	1100

### Dominator

Model Number	Nominal Size (WxHxD) Inches	Actual Size (WxHxD) Inches	Rated Air Flow Capacity (CFM)
<b>Dominator 4" - MERV 11</b> Initial Resistance (In. W.G.): 0.19" Recommended Final Resistance (In. W.G.): 1.5"			
DR65-4404	24 x 24 x 4	23 3/8 x 23 3/8 x 3 3/4	2000
DR65-0504	20 x 25 x 4*	19 3/8 x 24 3/8 x 3 3/4	1750
DR65-0404	20 x 24 x 4	19 3/8 x 23 3/8 x 3 3/4	1650
DR65-0004	20 x 20 x 4	19 3/8 x 19 3/8 x 3 3/4	1400
DR65-6504	16 x 25 x 4*	15 3/8 x 24 3/8 x 3 3/4	1400
DR65-6004	16 x 20 x 4	15 3/8 x 19 3/8 x 3 3/4	1100
DR65-2404	12 x 24 x 4	11 3/8 x 23 3/8 x 3 3/4	1100

Model Number	Nominal Size (WxHxD) Inches	Actual Size (WxHxD) Inches	Rated Air Flow Capacity (CFM)
<b>Dominator 4" - MERV 11</b> Initial Resistance (In. W.G.): 0.31" Recommended Final Resistance (In. W.G.): 1.5"			
DR65-H-4404	24 x 24 x 4	23 3/8 x 23 3/8 x 3 3/4	2000
DR65-H-0404	20 x 24 x 4	19 3/8 x 23 3/8 x 3 3/4	1650
DR65-H-0004	20 x 20 x 4	19 3/8 x 19 3/8 x 3 3/4	1400
DR65-H-2404	12 x 24 x 4	11 3/8 x 23 3/8 x 3 3/4	1100

Model Number	Nominal Size (WxHxD) Inches	Actual Size (WxHxD) Inches	Rated Air Flow Capacity (CFM)
<b>Dominator 12" - MERV 11</b> Initial Resistance (In. W.G.): 0.19" Recommended Final Resistance (In. W.G.): 1.5"			
DR65B-4412	24 x 24 x 12	23 3/8 x 23 3/8 x 11 1/2	2000
DR65B-0412	20 x 24 x 12	19 3/8 x 23 3/8 x 11 1/2	1650
DR65B-0012	20 x 20 x 12	19 3/8 x 19 3/8 x 11 1/2	1400
DR65B-2412	12 x 24 x 12	11 3/8 x 23 3/8 x 11 1/2	1000

Model Number	Nominal Size (WxHxD) Inches	Actual Size (WxHxD) Inches	Rated Air Flow Capacity (CFM)
<b>Dominator 12" - MERV 11</b> Initial Resistance (In. W.G.): 0.26" Recommended Final Resistance (In. W.G.): 1.5"			
DR65-4412	24 x 24 x 12	23 3/8 x 23 3/8 x 11 1/2	2000
DR65-0412	20 x 24 x 12	19 3/8 x 23 3/8 x 11 1/2	1650
DR65-0012	20 x 20 x 12	19 3/8 x 19 3/8 x 11 1/2	1400
DR65-2412	12 x 24 x 12	11 3/8 x 23 3/8 x 11 1/2	1000

Model Number	Nominal Size (WxHxD) Inches	Actual Size (WxHxD) Inches	Rated Air Flow Capacity (CFM)
<b>Dominator 12" - MERV 15</b> Initial Resistance (In. W.G.): 0.28" Recommended Final Resistance (In. W.G.): 1.5"			
DR95B-4412	24 x 24 x 12	23 3/8 x 23 3/8 x 11 1/2	2000
DR95B-0412	20 x 24 x 12	19 3/8 x 23 3/8 x 11 1/2	1650
DR95B-0012	20 x 20 x 12	19 3/8 x 19 3/8 x 11 1/2	1400
DR95B-2412	12 x 24 x 12	11 3/8 x 23 3/8 x 11 1/2	1000

Model Number	Nominal Size (WxHxD) Inches	Actual Size (WxHxD) Inches	Rated Air Flow Capacity (CFM)
<b>Dominator 12" - MERV 15</b> Initial Resistance (In. W.G.): 0.34" Recommended Final Resistance (In. W.G.): 1.5"			
DR95-4412	24 x 24 x 12	23 3/8 x 23 3/8 x 11 1/2	2000
DR95-0412	20 x 24 x 12	19 3/8 x 23 3/8 x 11 1/2	1650
DR95-0012	20 x 20 x 12	19 3/8 x 19 3/8 x 11 1/2	1400
DR95-2412	12 x 24 x 12	11 3/8 x 23 3/8 x 11 1/2	1000

\* Reverse size pleat on 25" height product.

Notes:  
Metal frames are also available. Contact factory.  
All performance data is based on the ASHRAE 52.2 Test Standard with a test velocity of 492 FPM for 24 x 24 face size.  
Continuous operating temperature: 170°F (76°C).



100 River Ridge Circle  
Jeffersonville, IN 47130  
www.clair.com, 1.866.925.2247